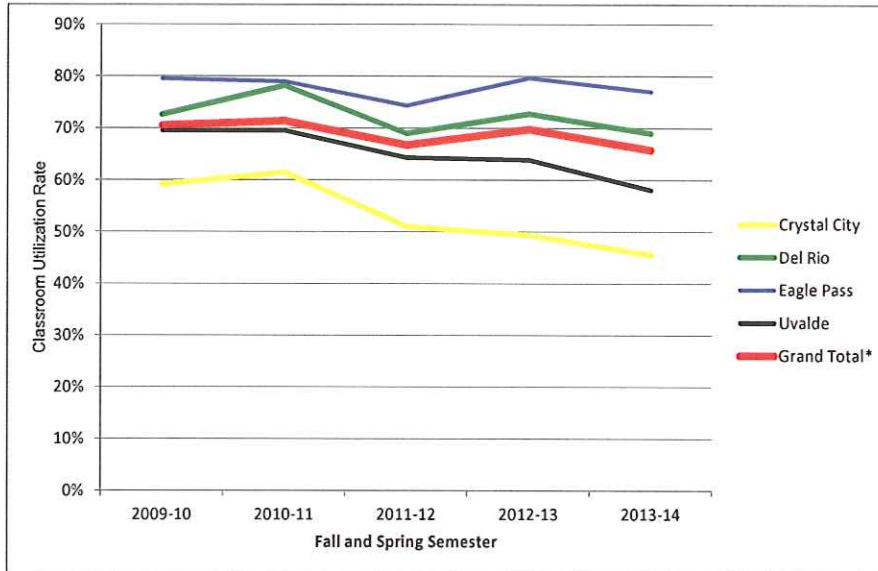


SWTJC Classroom Utilization Rate

Location	Fall and Spring Semester				
	2009-10	2010-11	2011-12	2012-13	2013-14
Crystal City	59%	61%	51%	49%	46%
Del Rio	73%	78%	69%	73%	69%
Eagle Pass	80%	79%	74%	80%	77%
Uvalde	69%	69%	64%	64%	58%
Grand Total*	71%	71%	67%	70%	66%

*Includes all locations



SWTJC Classroom Utilization Rate

Fall and Spring 2013-14

Location	Total Class Sections	Total Capacity	Total Class Size	Average Class Size	Utilization Rate
Crystal City	137	2,441	1,112	8	46%
Del Rio	378	7,759	5,348	14	69%
Eagle Pass	480	11,561	8,895	19	77%
Uvalde	589	13,261	7,691	13	58%
Grand Total*	2,154	46,068	30,290	14	66%

Fall and Spring 2012-13

Location	Total Class Sections	Total Capacity	Total Class Size	Average Class Size	Utilization Rate
Crystal City	137	2,421	1,195	9	49%
Del Rio	389	7,970	5,797	15	73%
Eagle Pass	478	11,506	9,166	19	80%
Uvalde	634	14,330	9,146	14	64%
Grand Total*	2,213	47,340	33,025	15	70%

Fall and Spring 2011-12

Location	Total Class Sections	Total Capacity	Total Class Size	Average Class Size	Utilization Rate
Crystal City	141	2,667	1,360	10	51%
Del Rio	439	8,919	6,147	14	69%
Eagle Pass	562	13,481	10,019	18	74%
Uvalde	614	14,547	9,357	15	64%
Grand Total*	2,207	48,266	32,213	15	67%

Fall and Spring 2010-11

Location	Total Class Sections	Total Capacity	Total Class Size	Average Class Size	Utilization Rate
Crystal City	166	3,066	1,885	11	61%
Del Rio	459	9,007	7,043	15	78%
Eagle Pass	583	13,958	11,019	19	79%
Uvalde	674	15,373	10,684	16	69%
Grand Total*	2,368	51,349	36,657	15	71%

Fall and Spring 2009-10

Location	Total Class Sections	Total Capacity	Total Class Size	Average Class Size	Utilization Rate
Crystal City	144	2,709	1,602	11	59%
Del Rio	432	9,210	6,690	15	73%
Eagle Pass	551	12,932	10,287	19	80%
Uvalde	675	15,028	10,439	15	69%
Grand Total*	2,292	49,600	34,973	15	71%

Source: Estudios Enterprise Reports Class Utilization Rate

*Includes all locations

SWTJC Classroom Utilization Rate

Fall and Spring 2013-14

Location	Total Class Sections	Total Capacity	Total Class Size	Average Class Size	Utilization Rate
Crystal City	137	2,441	1,112	8	46%
Del Rio	378	7,759	5,348	14	69%
Eagle Pass	480	11,561	8,895	19	77%
Uvalde	589	13,261	7,691	13	58%
Grand Total*	2,154	46,068	30,290	14	66%

Fall and Spring 2012-13

Location	Total Class Sections	Total Capacity	Total Class Size	Average Class Size	Utilization Rate
Crystal City	137	2,421	1,195	9	49%
Del Rio	389	7,970	5,797	15	73%
Eagle Pass	478	11,506	9,166	19	80%
Uvalde	634	14,330	9,146	14	64%
Grand Total*	2,213	47,340	33,025	15	70%

Fall and Spring 2011-12

Location	Total Class Sections	Total Capacity	Total Class Size	Average Class Size	Utilization Rate
Crystal City	141	2,667	1,360	10	51%
Del Rio	439	8,919	6,147	14	69%
Eagle Pass	562	13,481	10,019	18	74%
Uvalde	614	14,547	9,357	15	64%
Grand Total*	2,207	48,266	32,213	15	67%

Fall and Spring 2010-11

Location	Total Class Sections	Total Capacity	Total Class Size	Average Class Size	Utilization Rate
Crystal City	166	3,066	1,885	11	61%
Del Rio	459	9,007	7,043	15	78%
Eagle Pass	583	13,958	11,019	19	79%
Uvalde	674	15,373	10,684	16	69%
Grand Total*	2,368	51,349	36,657	15	71%

Fall and Spring 2009-10

Location	Total Class Sections	Total Capacity	Total Class Size	Average Class Size	Utilization Rate
Crystal City	144	2,709	1,602	11	59%
Del Rio	432	9,210	6,690	15	73%
Eagle Pass	551	12,932	10,287	19	80%
Uvalde	675	15,028	10,439	15	69%
Grand Total*	2,292	49,600	34,973	15	71%

Source: Estudios Enterprise Reports Class Utilization Rate

*Includes all locations